

# Q

MADE BY ANN SACKS

## Quarterly



Volume 11

# VISTAS



Introducing  
**VISTAS**

*Handcrafted in our Portland, Oregon factory,  
MADE Vistas is the latest addition to the  
MADE by Ann Sacks stoneware collection.*



*Inspired by the proportional scale of Mid-Century  
Modern design, Vistas uses the layering of two glazes  
on a single 3"x9" tile to create a two-tone effect.*

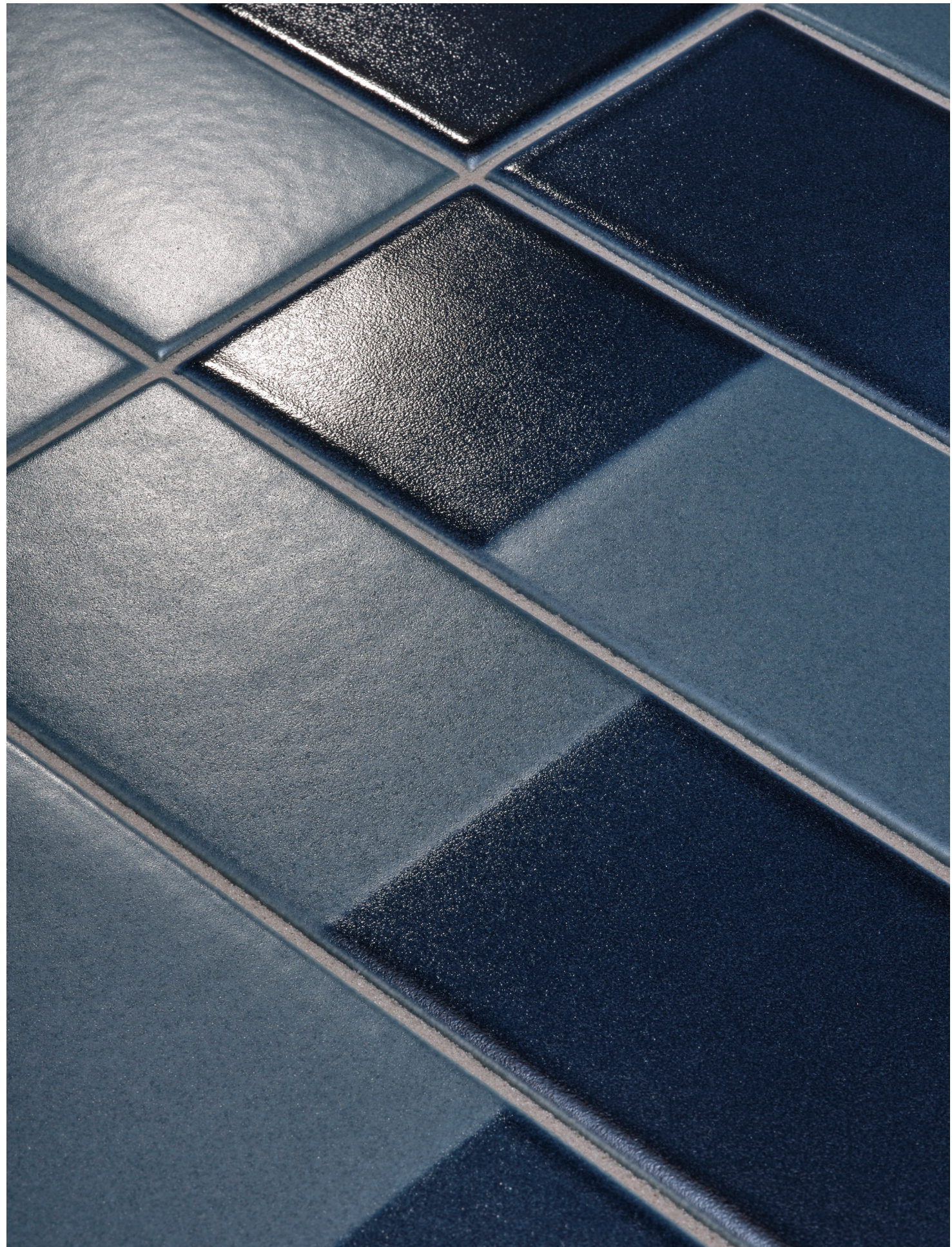
*Vistas is available in three distinctive styles – Half Horizontal,  
Half Vertical and Quarter Vertical – available in a curated color  
palette. Mix and match two-tone designs or pair with a solid 3"x9"  
field tile to create a beautiful, modern tile statement in your home.*

“The contrast of the matte and gloss finishes and the interactive quality of the glaze add such incredible character and depth to these designs.”

- DEEDEE GUNDBERG, ANN SACKS DIRECTOR  
OF PRODUCT DEVELOPMENT & DESIGN

PATTERNS, LEFT TO RIGHT: Half Vertical, Half Horizontal, Quarter Vertical  
COLORS, TOP TO BOTTOM: Vert over Basil, Lapis over Aventurine, New Spiced  
Ginger over Steelhead, Flannel over White Shimmer, New Mercury over Steel.





ABOVE: MADE by ANN SACKS Vistas Half and Quarter Vertical in Lapis over Aventurine. RIGHT: Half Horizontal in Lapis over Aventurine.



THIS PAGE: MADE by ANN SACKS Vistas Half Vertical, Half Horizontal and Quarter Vertical in New Spiced Ginger over Steelhead and Flannel over White Shimmer.  
 RIGHT: Half Vertical and Quarter Vertical in New Spiced Ginger over Steelhead and Flannel over White Shimmer.





“The versatility in how you can configure Vistas gives designers the ability to be creative within a collection and put their personal stamp on the design.”

- DEEDEE GUNDBERG, ANN SACKS DIRECTOR OF PRODUCT DEVELOPMENT & DESIGN



LEFT: MADE by ANN SACKS Vistas Half Vertical and Quarter Vertical New Spiced Ginger over Steelhead. Design by OD Interiors.  
THIS PAGE: Half Vertical, Half Horizontal and Quarter Vertical in New Spiced Ginger over Steelhead.



THIS PAGE: MADE by ANN SACKS Vistas Half Horizontal Lapis over Aventurine. Design by OD Interiors.  
LEFT: Half Horizontal in Flannel over White Shimmer, New Mercury over Steel and New Spiced Ginger over Steelhead.

“The MADE Vistas collection blends thoughtful texturing, precise layering, and lavish color combinations that allow you to play, create and design rooms that come alive. Small spaces, charming nooks or entire wall surfaces – the Vistas collection will elevate any home environment.”

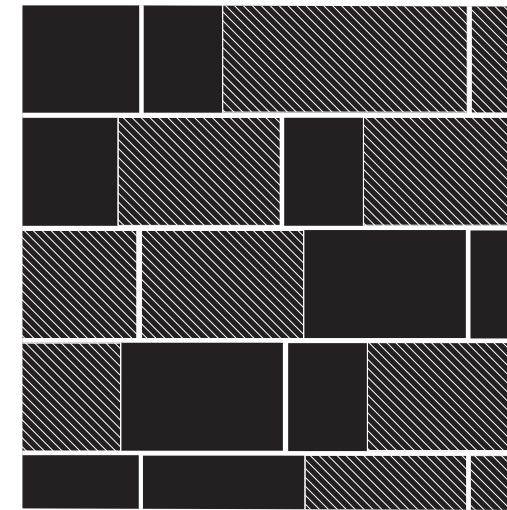
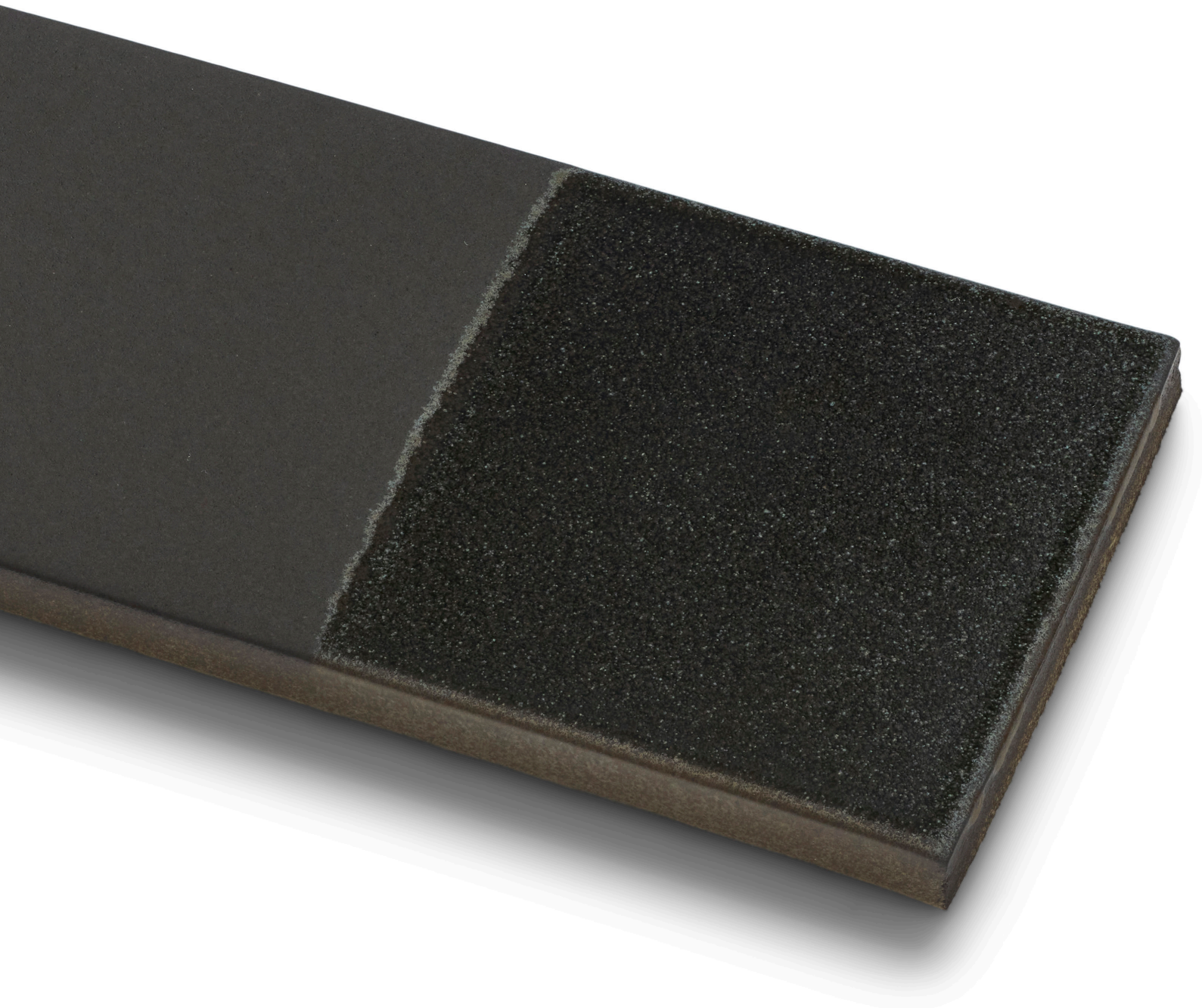
- OD INTERIORS GROUP

RIGHT: MADE by ANN SACKS Vistas Half Horizontal 3" x 9" field in Vert over Basil.

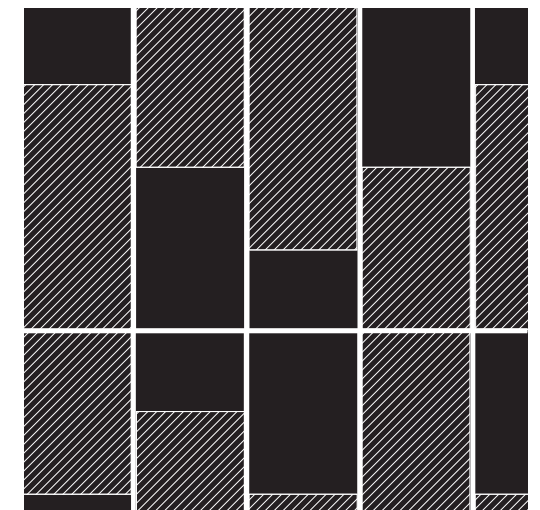


# VERTICAL

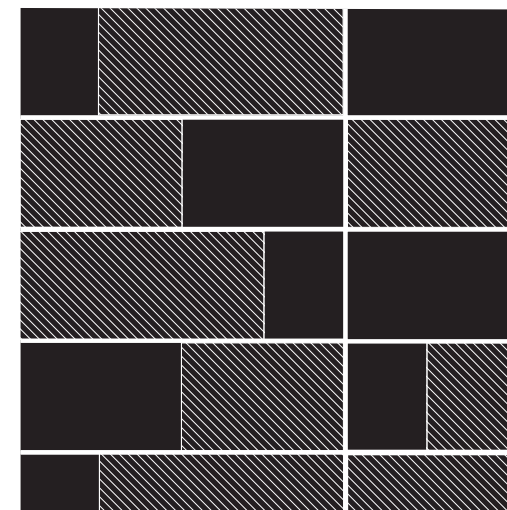
With the ability to combine tile designs and rich glazes in countless ways, the Vistas collection allows you to create a handcrafted, bespoke statement in any space. The two-toned stoneware collection can be laid up vertically or horizontally in a single pattern – or the patterns can be mixed, flipped, or reversed – to create any number of imaginative, custom installations.



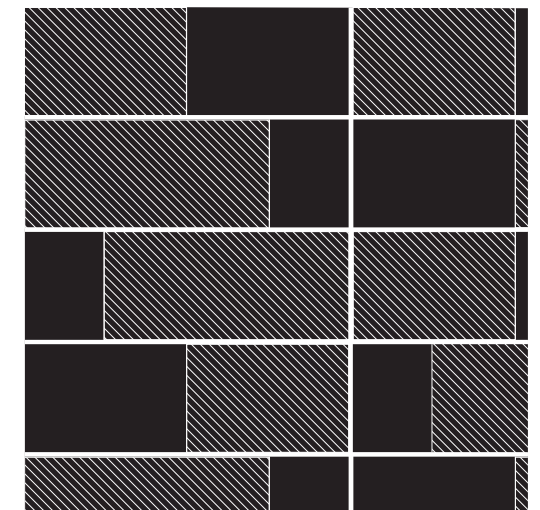
HALF / QUARTER RANDOM OFFSET PATTERN



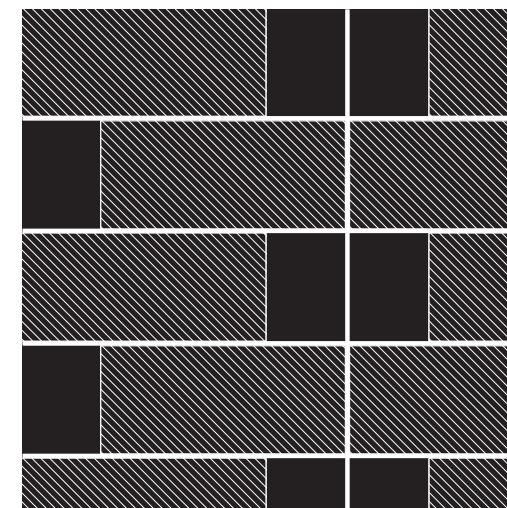
HALF / QUARTER RANDOM SOLDIER STACK PATTERN



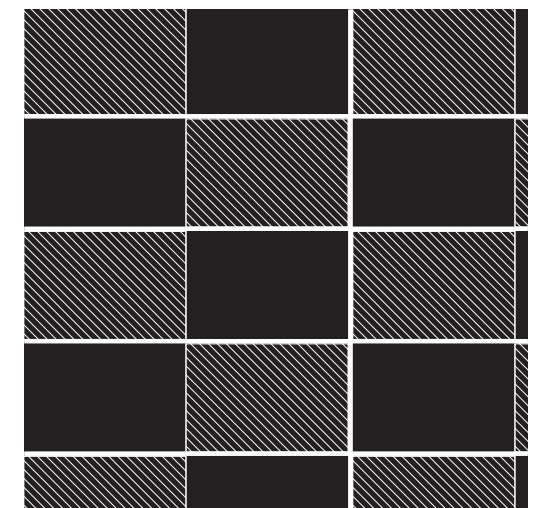
HALF / QUARTER RANDOM STRAIGHT STACK PATTERN



HALF / QUARTER RANDOM ROTATED STACK PATTERN



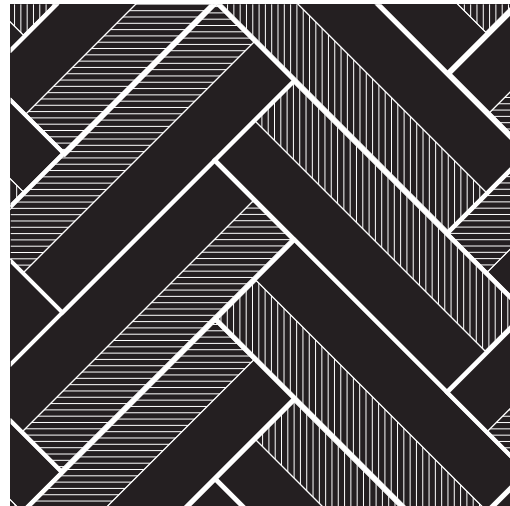
QUARTER ROTATED STACK PATTERN



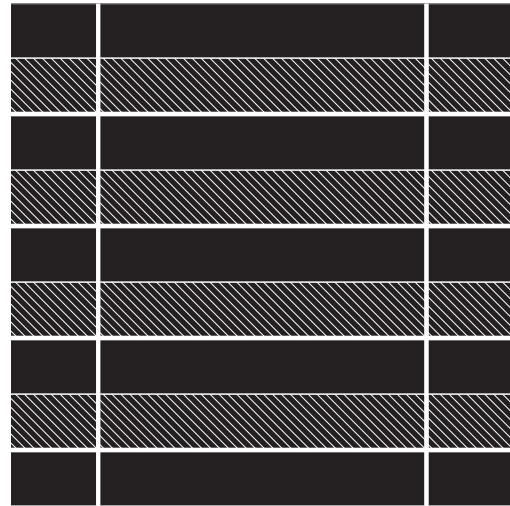
HALF ROTATED STACK PATTERN

# HORIZONTAL

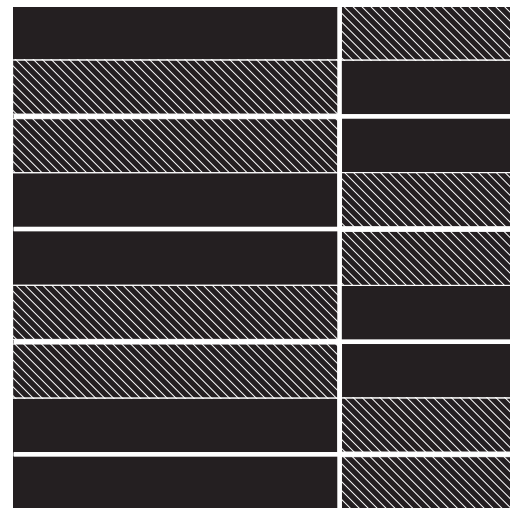
Used on its own, or in conjunction with the Half and Quarter designs, the bold, contrasting lines of the Horizontal glaze inspire dynamic layouts and infinite creative possibilities.



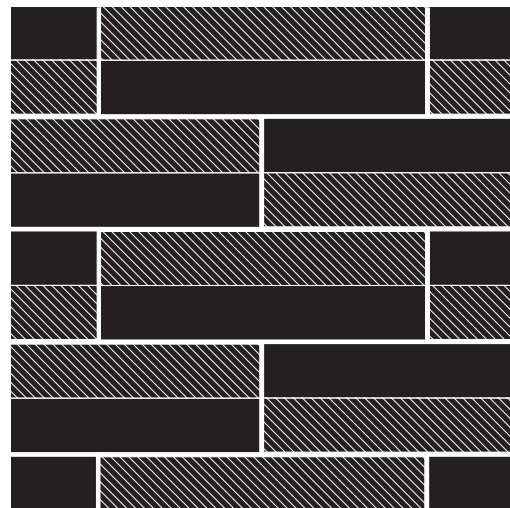
ROTATED HERRINGBONE PATTERN



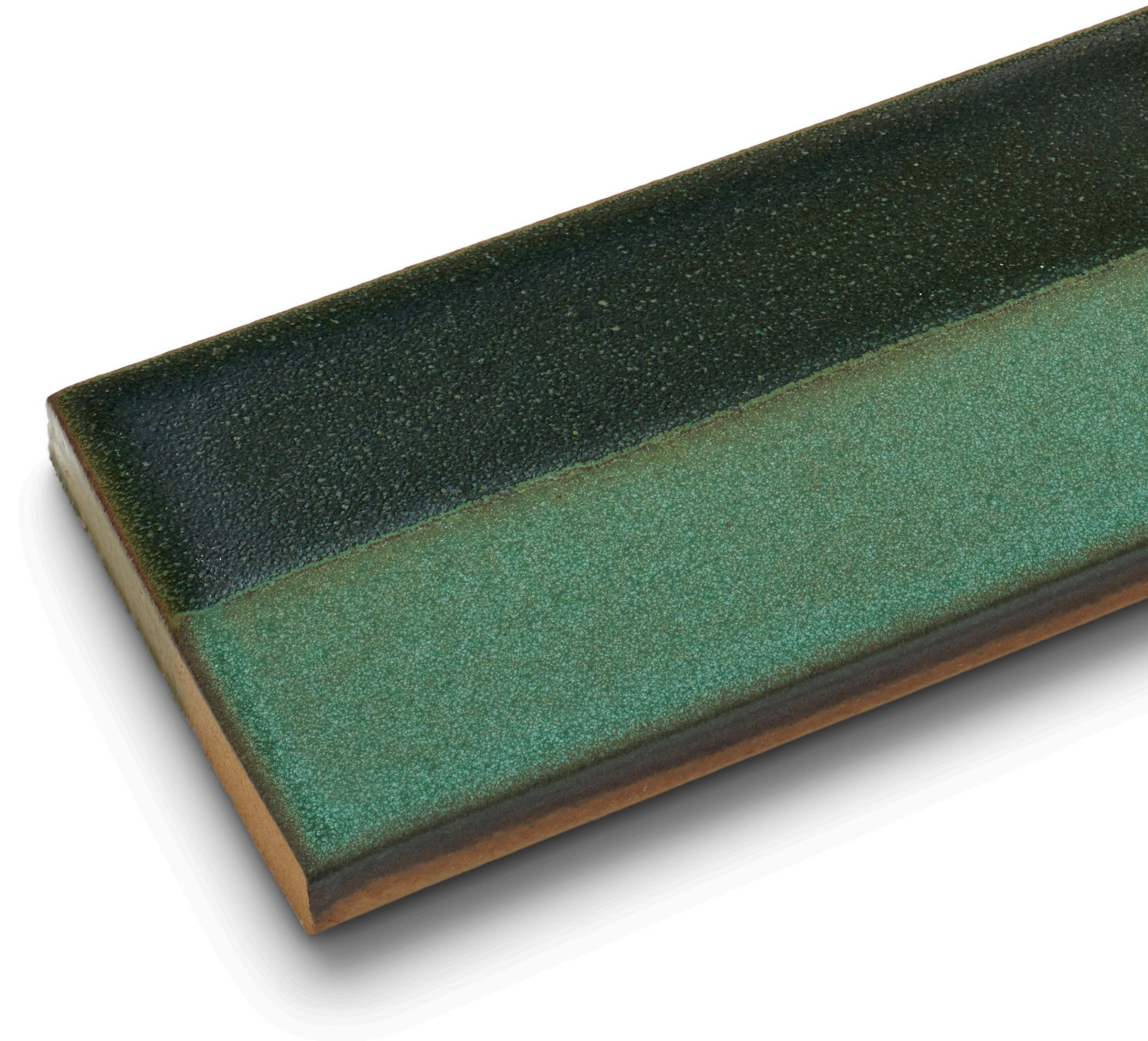
STRAIGHT STACK PATTERN



ROTATED STACKED PATTERN



ROTATED OFFSET



ABOVE: MADE by ANN SACKS Vistas Half Horizontal 3" x 9" field in Vert over Basil.  
BACK COVER: Half Horizontal 3" x 9" field in Flannel over White Shimmer. Design by OD Interiors

MADE BY ANN SACKS™

Handmade by us. Exclusively for you.



1-800-278-8453 | [annsacks.com](https://annsacks.com)



Share your projects using #myannsacks