

Soffitta

The imperfections of this industrial inspired collection give Soffitta its defining characteristic. Inspired by distressed walls, fragmented by wear and patinaed by rusted steel concealed within, this collection strikes a harmonious balance of industrial beauty.



48" x 102" Slab in Grey

RECOMMENDED USE

- Suitable for indoor and outdoor wall and flooring applications, including commercial
- Suitable for installation on shower walls
- Suitable for high temperature areas such as behind ranges and fireplace surrounds
- Suitable for submerged areas such as pools or fountains
- Outdoor use subject to climate and method of installation
- Suitable for freeze/thaw conditions
- Please see Ann Sacks slip resistance and wet flooring application statement to determine usage in a wet area
- Testing data available upon request



wall



shower wall



high-traffic



freeze/thaw

INSTALLATION AND MAINTENANCE

- Install per TCNA Handbook for ceramic tile
- Always inspect material prior to installation — installed material cannot be accepted for return or credit
- Always lay out material prior to installation to properly blend and balance color



Soffitta contains 44% pre-consumer recycled content

COLLECTION

Field	Stock 18"x36" (17.571" x 35.220" x 0.276") Non-stock 48"x102" Slab (46.970" x 102.36" x 0.256") (Slab only offered in grey)
Trim	Stock SBN: 3"x18" (2.874" x 17.571" x 0.276")
Material	Porcelain
Color	Black, Grey, White
Lead Time	In-stock: Lead Times are 1-2 weeks Non-stock: Lead Times are 1-2 weeks (Lead Times are subject to change)

*Please note: variations in color, shade, surface texture and size are natural characteristics of all our products and should be expected. Images shown are representative, but may not indicate all variations in these characteristics.

6/2019

ANN SACKS

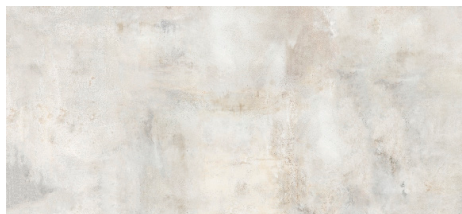
www.annsacks.com | 1.800.278.8453

Soffitta

WHITE

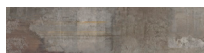


3"x18" SBN

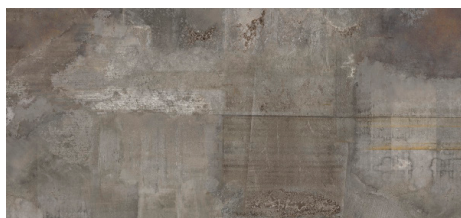


18"x36"

GREY



3"x18" SBN



18"x36"



48"x102" Slab

*Please note: variations in color, shade, surface texture and size are natural characteristics of all our products and should be expected. Images shown are representative, but may not indicate all variations in these characteristics.

6/2019

ANN SACKS[®]

www.annsacks.com | 1.800.278.8453

Soffitta

BLACK



3"x18" SBN



18"x36"

*Please note: variations in color, shade, surface texture and size are natural characteristics of all our products and should be expected. Images shown are representative, but may not indicate all variations in these characteristics.

6/2019

ANN SACKS

www.annsacks.com | 1.800.278.8453