

# Profile

Profile, manufactured exclusively for ANN SACKS by Oceanside Glasstile, offers handcrafted glass tile with a luminous quality and beautiful surface texture. Profile is made from silica sand, an abundant natural resource, with most colors also containing recycled content. Profile glass tile is available in a rich palette of warm earth tones, soothing blues and greens, dramatic metallics and a vibrant red.



## RECOMMENDED USE

- Suitable for all indoor wall and medium duty flooring applications
- Outdoor use subject to method of installation
- Suitable for use in wet areas such as showers, pools or fountains



wet area



floor



outdoor



wall

## INSTALLATION AND MAINTENANCE

- Please reference the TCNA handbook for installation of glass tile ([www.tcnatile.com](http://www.tcnatile.com))
- To avoid cracking, always use a crack suppression membrane and make cuts using proper glass cutting equipment
- Due to transparent quality, use white thinset adhesive
- Use sanded grout
- Clean with warm soapy water or PH neutral glass cleaner and soft cloth



Profile glass is made with recycled content, in addition to silica sand. Depending on the color, the tiles contain up to 30% pre-consumer recycled content and up to 65% post-consumer recycled bottle glass. Both sunset and night sky contain over 72% post-consumer curbside recycled bottle glass for total recycled content of 86%.

## COLLECTION

Field	Beveled Brick (2.875" x 8.875" x 0.562") Drift (3.000" x 3.000" x 0.750") Offset Ridge (1.750" x 8.750" x 0.7500") Plateaus (Low) (3.000" x 3.000" x 0.250") Plateaus (Mid) (3.000" x 3.000" x 0.375") Plateau High (3.000" x 3.000" x 0.500") Ridge 3"x3" (3.000" x 3.000" x 0.688") Ridge 2"x9" (1.750" x 8.750" x 0.750") Segmented Hex (8.625" x 10.000" x 0.250") Standard 1.5"x9" (1.500" x 9.000" x 0.500") Standard 3"x9" (3.000" x 9.000" x 0.500") Standard 3"x6" (2.875" x 5.875" x 0.375") Standard 6"x9" (5.875" x 8.875" x 0.437") Standard 9"x9" (8.875" x 8.875" x 0.437")
Mosaic	1"x6" Stacked Glaze Sticks (12.000" x 12.000" x 0.2500") Herringbone 3/4" (12.125" x 13.125" x 0.250") Hexagon (11.640" x 12.250" x 0.250") Offset (11.500" x 12.250" x 0.250") Stacked (11.500" x 11.500" x 0.250") Straight (12.250" x 12.250" x 0.250") Trapezoid (12.310" x 13.130" x 0.250") Two-by Two 3/4" (13.125" x 13.125" x 0.250")
Trim	Bamboo (1.000" x 8.750" x 0.875") Plateau (1.500" x 9.000" x 0.500") Quarter Round (1.000" x 9.000" x 0.375") Standard (1.000" x 9.000" x 0.500") Standard Molding (2.875" x 8.875" x 0.687")
Material	Glass
Color	Many colors to choose from- please find palette (Not all formats available in all colors, please check with your sales associate for more details)
Lead Time	Typical Lead Times are 2-3 weeks (Excluding Transit Times. Lead Times are subject to change)

\*Please note: variations in color, shade, surface texture and size are natural characteristics of all our products and should be expected. Images shown are representative, but may not indicate all variations in these characteristics.

2/2020

# ANN SACKS®

[www.annsacks.com](http://www.annsacks.com) | 1.800.278.8453

# Profile

---

## FIELD



Beveled Brick



Drift



Plateau



Rectangle



Ridge



Square

## MOSAIC



Herringbone



Hexagon



Off Set



Stacked



Segmented Hex



Trapezoid



Two by Two

# Profile

---

## PALETTE



White Cap  
Irid



White Cap  
Non Irid



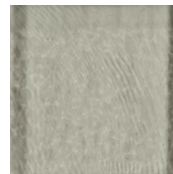
Mist Irid



Mist Non Irid



Platinum Irid



Platinum Non Irid



Rain Irid



Rain Non Irid



Blue Moon Irid



Pacific Irid



Pacific Non Irid



Stream Irid



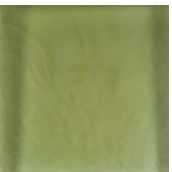
Clay Irid



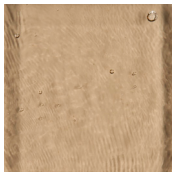
Daybreak Irid



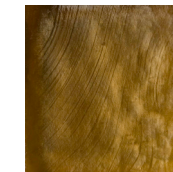
Agave Non Irid



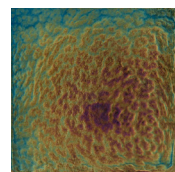
Agave Irid



Daybreak  
Non Irid



Prairie Irid



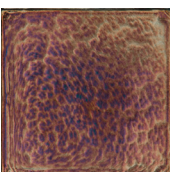
Rainbow Irid



Sunset Irid



Lava Non Irid



Incense Irid



Shadow Irid



Lakeside Irid



Night Sky Irid

\*Please note: variations in color, shade, surface texture and size are natural characteristics of all our products and should be expected. Images shown are representative, but may not indicate all variations in these characteristics.

07/2018

ANN SACKS®

[www.annsacks.com](http://www.annsacks.com) | 1.800.278.8453