

# Savoy Classic

Our Savoy Classic collection is crafted by Japanese artisans, using unique glazes that break over the tile edge, adding a strong design element to any setting. The inventoried collection has an extensive range of field, mosaic and trim formats, offering limitless possibilities at a great value.

### RECOMMENDED USE

- Suitable for all indoor wall and medium-duty flooring applications — Bronze glaze suitable for indoor walls and light-duty flooring only
- Circle and Pleated not suitable for flooring applications
- Suitable for installation on shower walls (except Bronze)
- Suitable for submerged areas, such as pools or fountains (except Bronze)
- Outdoor use subject to climate and method of installation
- Material not affected by freeze/thaw conditions
- Suitable for high-temperature areas such as behind ranges and fireplace surrounds or pizza ovens, so long as temperatures do not exceed 500 degrees F
- Bronze NOT recommended for wet areas, since acidic or abrasive cleaners and certain pool chemicals may affect the finish
- Please see Ann Sacks slip-resistance and wet flooring statement to determine usage in a wet area



wall



shower wall



residential floor



freeze/thaw



outdoor

### INSTALLATION AND MAINTENANCE

- Install per industry standards for ceramic tile
- Always inspect material prior to installation — installed material cannot be accepted for return or credit
- Always lay out material prior to installation to properly blend and balance color
- It is recommended to seal with a penetrating sealer before and after grouting
- Avoid acidic cleaners or abrasive scouring pads, especially for Bronze glaze
- If used in submerged areas, product must be ordered with paper faced mounting *(Minimum orders and additional fees may apply to custom ordered Paper-Faced Mosaics)*



eco-thinking

Savoy tiles are made from 21% pre-consumer recycled content, including ceramic waste material from discarded clay and smashed tableware. The rest of the tile body is composed of 22% clay and 57% feldspar.

ANN SACKS®



Large Stack Mosaic in Ricepaper

### COLLECTION

Field	2"x8" Ribbed (1.850" x 7.756" x 0.335") 3"x6" (2.835" x 5.787" x 0.276") 3"x12" (2.756" x 11.614" x 0.374") 4"x8" (3.875" x 7.756" x 0.276") 4" Hex (4.319" x 3.740" x 0.295") 6"x6" Circle (5.787" x 5.787" x 0.453") 6"x6" Flat (5.787" x 5.787" x 0.335") 6"x6" Pleated (5.787" x 5.787" x 0.453")
Mosaic	Arrowhead (Sheet: 10.402" x 12.573" x 0.276") Herringbone (Sheet: 11.083" x 11.102" x 0.236") Hive (Sheet: 11.472" x 12.614" x 0.236") Offset (Sheet: 11.102" x 11.772" x 0.236") ¾" Pennies (Sheet: 11.614" x 11.614" x 0.197") Small Stack (Sheet: 11.693" x 11.732" x 0.236") Large Stack (Sheet: 11.811" x 11.811" x 0.276") Swiss Cross (Sheet: 11.575" x 11.575" x 0.236") Thin Stack (Sheet: 11.811" x 11.811" x 0.256")
Paper Faced Mosaic	Arrowhead (Sheet: 10.402" x 12.573" x 0.276") Herringbone (Sheet: 11.083" x 11.102" x 0.236") Large Stack (Sheet: 11.811" x 11.811" x 0.276") Swiss Cross (Sheet: 11.575" x 11.575" x 0.236")
Trim	½"x8" Box Liner (0.512" x 7.756" x 0.394") 1"x8" Quarter Round (0.787" x 7.756" x 0.276") 2"x8" Bullnose SBN (1.850" x 7.756" x 0.276")
Material	Ceramic
Color	Bronze (metallic), Chalk, Cottonwood, Driftwood, Graphite, Juniper, Lantern, Linen, Lotus, Paperwhite, Ricepaper  <i>*Juniper not available in: 4" Hex, 6"x6" Circle, 6"x6" Flat, 1"x8" Quarter Round, Herringbone Mosaic, Offset Mosaic, Small Stack Mosaic, Thin Stack</i>  Paper Faced Cottonwood, Lantern, Lotus, Ricepaper
Lead Time	In-stock. Typical lead times are 1-2 weeks <i>(Lead Times are subject to change)</i>

\*Please note: variations in color, shade, surface texture and size are natural characteristics of all our products and should be expected. Images shown are representative, but may not indicate all variations in these characteristics.

7/2023

[www.annsacks.com](http://www.annsacks.com) | 1.800.278.8453

# Savoy Classic

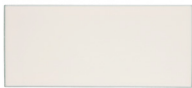
---

## FIELD (Shown in Ricepaper)

---



2"x8" Ribbed



3"x6"



3"x12"



4"x8"



4" Hex



6"x6" Circle



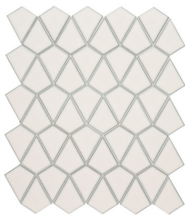
6"x6" Pleated



6"x6" Flat

## MOSAIC (Shown in Ricepaper)

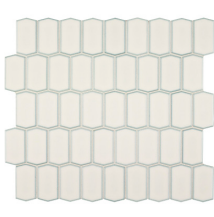
---



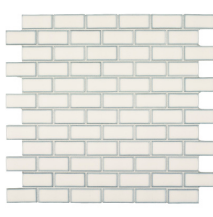
Arrowhead



Herringbone



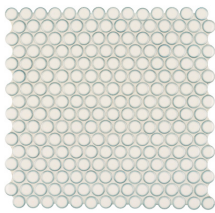
Hive



7/8"x1 1/8" Offset



Thin Stack



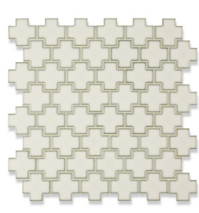
3/4" Pennies



5/8"x1 7/8" Stack



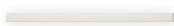
1"x4" Stack



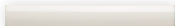
Swiss Cross

## TRIM (Shown in Ricepaper)

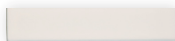
---



1/2"x8" Box Liner



1"x8" Quarter Round



2"x8" Bullnose SBN

# Savoy Classic

---

COLOR PALETTE (Shown in Swiss Cross Mosaic)

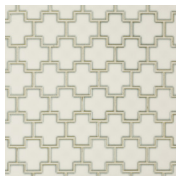
---



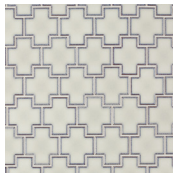
Paperwhite



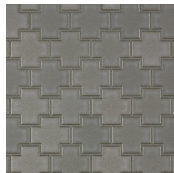
Chalk



Ricepaper



Cottonwood



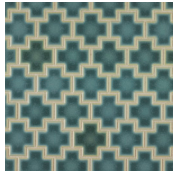
Driftwood



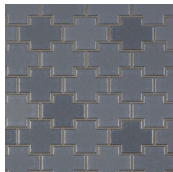
Lotus



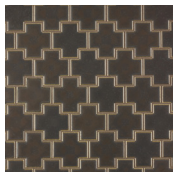
Linen



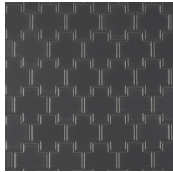
Juniper



Lantern



Bronze  
*(metallic)*



Graphite

# Savoy Prints

Savoy Prints is a stunning graphic addition to the larger Savoy program (Field Tile, Mosaics and Trims) available in three gorgeous colorways: Blue and White, tonal Black and tonal White. Explore unlimited possibilities by combining with Savoy Classic to create custom patterns and color blends for the ultimate in bespoke design expression. Suitable to nearly every design style.



6" x 6" Insho Triangles in Black

### RECOMMENDED USE

- Suitable for all indoor wall and light-duty flooring applications
- Suitable for installation on shower walls
- Outdoor use subject to climate and method of installation
- Material not affected by freeze/thaw conditions
- Suitable for high-temperature areas such as fireplaces, behind ranges or pizza ovens as long as temperatures do not exceed 500 degrees F.
- Please see Ann Sacks slip-resistance and wet flooring statement to determine usage in a wet area
- Testing data available upon request



wall



shower wall



residential floor



freeze/thaw



outdoor

### COLLECTION

Field	Insho 6"x6" (5.748" x 5.748" x 0.315")
Design	Circles, Flowers, Lines, Triangles
Material	Ceramic
Color	Black, Blue, White
Lead Time	In-stock. Typical lead times are 1-2 weeks <i>(Lead times are subject to change)</i>

### INSTALLATION AND MAINTENANCE

- Install per TCNA Handbook for ceramic tile
- Always inspect material prior to installation — installed material cannot be accepted for return or credit
- Always lay out material prior to installation to properly blend and balance color
- It is recommended to seal with a penetrating sealer before and after grouting



Savoy tiles are made from 21% pre-consumer recycled content, including ceramic waste material from discarded clay and smashed tableware. The rest of the tile body is composed of 22% clay and 57% feldspar.

ANN SACKS®

\*Please note: variations in color, shade, surface texture and size are natural characteristics of all our products and should be expected. Images shown are representative, but may not indicate all variations in these characteristics.

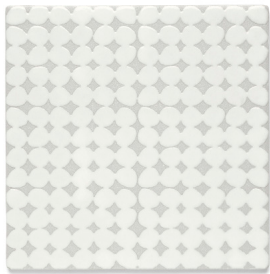
5/2023

# Savoy Prints

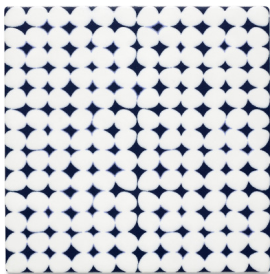
---

## DESIGNS

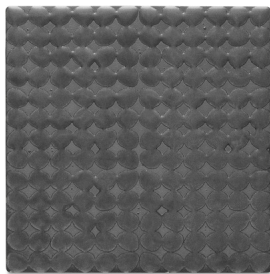
---



6"x6" Circles  
*in White*



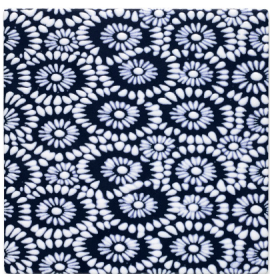
6"x6" Circles  
*in Blue*



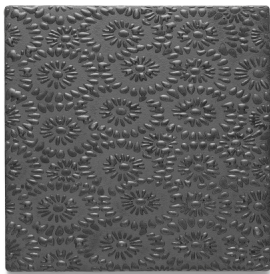
6"x6" Circles  
*in Black*



6"x6" Flowers  
*in White*



6"x6" Flowers  
*in Blue*



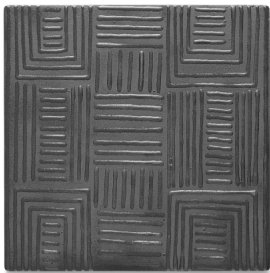
6"x6" Flowers  
*in Black*



6"x6" Lines  
*in White*



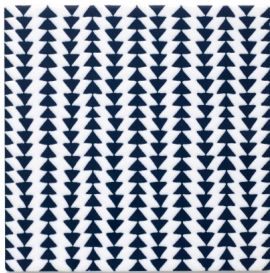
6"x6" Lines  
*in Blue*



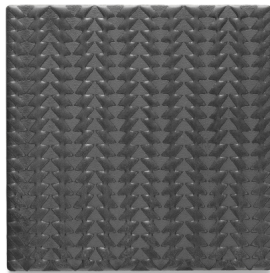
6"x6" Lines  
*in Black*



6"x6" Triangles  
*in White*



6"x6" Triangles  
*in Blue*



6"x6" Triangles  
*in Black*

# Savoy Dimensional

Savoy Dimensional is a bold offshoot of the larger Savoy program available in three designs and three artisan glazes. Explore unlimited possibilities by combining with Savoy Classic to create custom patterns and color blends for the ultimate in bespoke design expression. Suitable to nearly every design style.



3"x3" Anna Bevel in Lotus

## RECOMMENDED USE

- Suitable for all indoor wall applications
- Suitable for installation on shower walls
- Outdoor use subject to climate and method of installation
- Material not affected by freeze/thaw conditions
- Suitable for high-temperature areas such as fireplaces, behind ranges or pizza ovens so long as temperatures do not exceed 500 degrees F.
- Testing data available upon request



wall



shower wall



freeze/thaw

## INSTALLATION AND MAINTENANCE

- Install per TCNA Handbook for ceramic tile
- Always inspect material prior to installation — installed material cannot be accepted for return or credit
- Always lay out material prior to installation to properly blend and balance color
- It is recommended to seal with a penetrating sealer before and after grouting



Savoy tiles are made from 21% pre-consumer recycled content, including ceramic waste material from discarded clay and smashed tableware. The rest of the tile body is composed of 22% clay and 57% feldspar.

## COLLECTION

Field	Anna Bevel 3"x3" (2.835" x 2.835" x 0.570") 3"x6" (2.835" x 5.787" x 0.570") 4" Hex (4.319" x 3.740" x 0.531")
Material	Ceramic
Color	Cottonwood, Lotus, Ricepaper
Lead Time	In-stock. Typical Lead Times are 1-2 weeks (Lead Times are subject to change)

ANN SACKS®

\*Please note: variations in color, shade, surface texture and size are natural characteristics of all our products and should be expected. Images shown are representative, but may not indicate all variations in these characteristics.

7/2023

[www.annsacks.com](http://www.annsacks.com) | 1.800.278.8453

# Savoy Dimensional

---

FIELD (Shown in Lotus)

---



3" x 3"



4" Hex



3" x 6"

## COLOR

---



Ricepaper

*\*Not available in 3" x 6"*



Cottonwood



Lotus