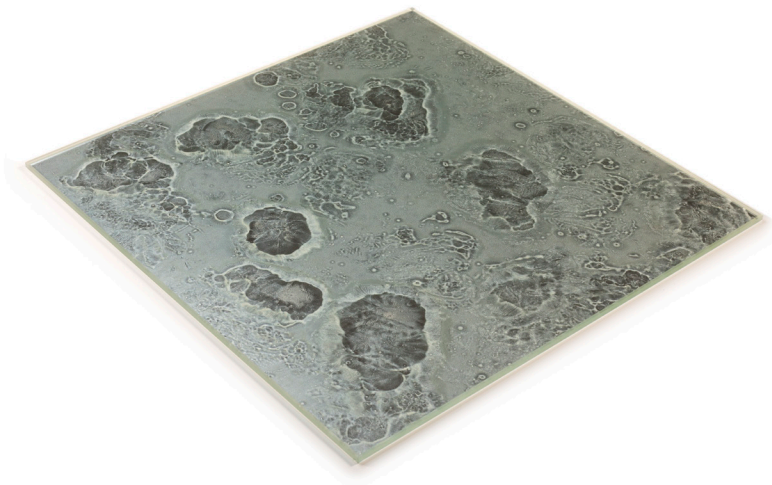


# Vedere

Vedere, a remarkable vintage look mirrored glass tile, is handcrafted by gifted artisans from Siena, Italy. This exclusive to Ann Sacks tile gives the appearance of a time-aged mirror. Its shimmering face shifts in varying soft color and has a surface broken by contrasting mottling and flecking making it a beautiful choice for all indoor wall applications.



Diamante

### RECOMMENDED USE

- Suitable for all indoor wall applications. Not suitable for outdoor use
- Not suitable for flooring, submerged areas such as pools or fountains, steam showers or high temperature areas such as fireplaces



wall



shower wall

### COLLECTION

Field	15.5"x15.5" (15.500" x 15.500" x 0.236") <i>Custom sizes available</i>
Material	Glass
Color	Standard: Diamante, Luna, Sodalite Premium: Polvere di Stelle
Lead Time	Lead Times are 2-4 weeks. <i>(Lead Times are subject to change)</i>

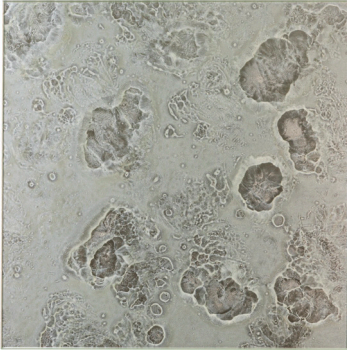
### INSTALLATION AND MAINTENANCE

- Install per manufacturer's installation instructions
- Always inspect material prior to installation, installed material cannot be accepted for return or credit
- Non-sanded grout is recommended to prevent scratching the surface of the tile
- Use extreme caution when handling glass tiles and wear protective gloves
- Clean with warm soapy water or PH neutral glass cleaner and soft cloth
- Glass tile should never be butt jointed due to expansion and contraction of glass

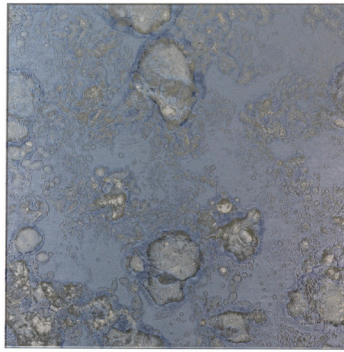
## COLORS

---

### STANDARD



15.5" x 15.5"  
*Diamante*

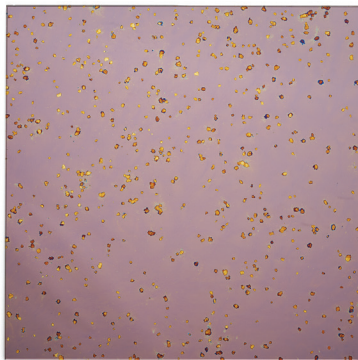


15.5" x 15.5"  
*Sodalite*



15.5" x 15.5"  
*Luna*

### PREMIUM



15.5" x 15.5"  
*Polvere di Stelle*

\*Please note: variations in color, shade, surface texture and size are natural characteristics of all our products and should be expected. Images shown are representative, but may not indicate all variations in these characteristics.