

# Piccolino

Piccolino mosaics are made with tiny sized tesserae which are tightly fitted and expertly assembled. The results are beautiful patterns that create incredible visual texture. Available in a variety of colors and patterns, with custom options if desired.



Woven Circle

## RECOMMENDED USE

- Suitable for indoor wall and flooring applications.
- Outdoor use subject to stone, climate, and method of installation.
- Please see Ann Sacks slip resistance and wet flooring application statement to determine usage in a wet area

## INSTALLATION AND MAINTENANCE

- Install per industry standards for stone mosaics.
- Always inspect material prior to installation; installed material cannot be accepted for return or credit.
- Seal with penetrating sealer such as Miracle Sealants 511 porous plus before and after grouting.
- For cleaning use products formulated for natural stone such as those available through Miracle Sealants.

## COLLECTION

Mosaics	Alex Key, Fishscale, Interlocking Circle, Knot, Tessellation, Trailing Vine, Trifoil, Woven Circle
Colors	Over 30 natural marble, limestone, travertine and granite stone colors available in honed, polished or combination finishes. The following stones coordinate with the ANN SACKS programmatic stone collections: adagio, athens grey, athens silver cream, blue celeste, calacatta borghini, carrara, champagne, eclipse, luxor grey, ming green, white thassos.
Lead Time	Typical Lead Times are 6-8 weeks. (Lead Times are subject to change)

\*Please note: variations in color, shade, surface texture and size are natural characteristics of all our products and should be expected. Images shown are representative, but may not indicate all variations in these characteristics.

# Piccolino

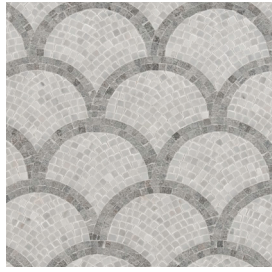
---

## MOSAICS

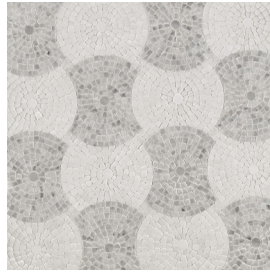
---



Alex Key



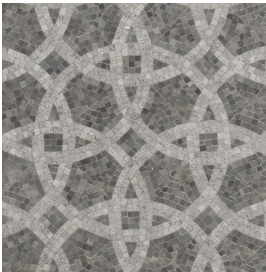
Fishscale



Interlocking Circle



Knot



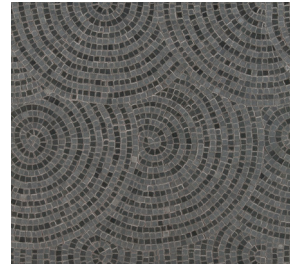
Tesselation



Trailing Vine



Trifoil



Woven Circle

\*Please note: variations in color, shade, surface texture and size are natural characteristics of all our products and should be expected. Images shown are representative, but may not indicate all variations in these characteristics.